

Cefas/IMARES/RWS - joint delivery of Dutch IBTS survey 2015



Dave Limpenny

**Centre for Environment, Fisheries and
Aquaculture Science (Cefas), UK**



This is the context...

- **IMARES requirement to deliver North Sea International Bottom Trawl Survey (IBTS) in Jan/Feb 2015**
- **RWS are vessel provider to IMARES**
- **Regular vessel (Tridens) not available due to major re-fit**
- **Suitable vessel replacement required**
- **IMARES/Cefas scientific links**
- **RWS speak to Cefas in relation to Cefas Endeavour - June 14**

Tridens

- Length - 73.00 m
- ICES compliant
- Beam - 14 m
- Draught - 5m
- Gross Tonnage - 2199
- Commissioned - 1990
- Maximum scientific complement - 13
- Winches - Suite of fishing and survey winches
- Side Gantry
- Stern Gantry



RV Cefas Endeavour

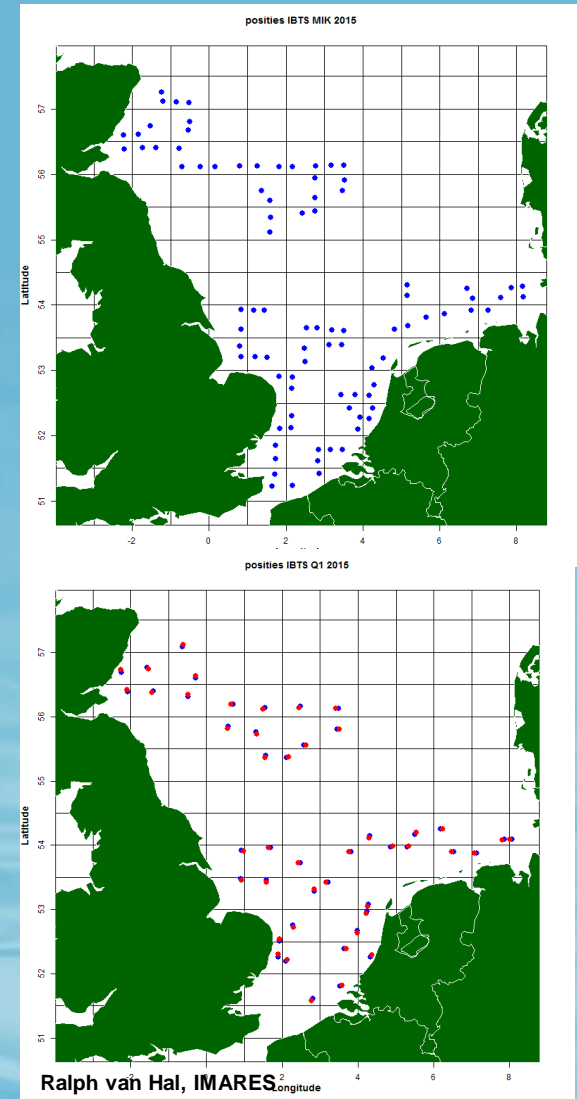
- Length - 73.00 m
- ICES compliant
- Beam - 15.80 m
- Draught - 5.5m (8.2m with drop keel)
- Gross Tonnage - 2983
- Commissioned - 2003
- Maximum scientific complement - 17
- Propulsion System - AC/DC Diesel Electric
- Thrusters - Bow and stern thrusters (DP0)
- Winches - Suite of fishing and survey winches
- Side Gantry
- Stern Gantry



Good match

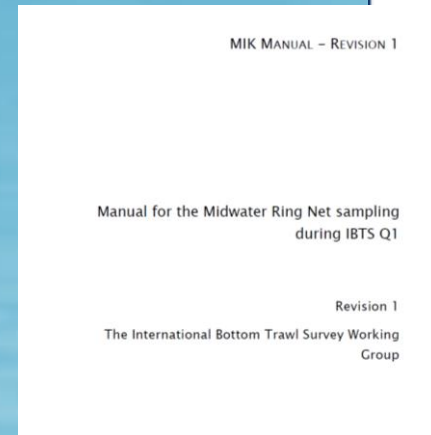
Survey planning

- **Initial RWS/IMARES visit Cefas Endeavour – June 14 to view vessel**
- **Technical survey meeting between Cefas and IMARES– July 14**
 - GOV survey daytime
 - MIK net overnight
 - Survey team - combined RWS x 4 /IMARES x 4 /Cefas x 2 /P&OMS (vessel managers and crew)
 - 44 GOV and 90 MIK net sites proposed
- **Second RWS/IMARES visit - Nov 14**
 - IMARES nylon GOV trawl
 - Cefas trawl doors and Scanmar
 - IMARES MIK nets
 - Cefas CTD
 - Cefas USBL



Admin/contracting/H&S

- Agreed a BIMCO supplytime charter party agreement
- Risk Assessments, Standard Operating Procedures, COSHH adapted and signed
- Sea survival certs and ENG1 medical equivalents agreed
- International survey permissions



 **Cefas** Health & Safety Management System
Procedure and Guidance (HS28 PAG)
"Fieldwork (including work in, on or near to water)"



Procedures and Guidance (PaG) 28
FIELDWORK
(INCLUDING WORKING IN, ON OR NEAR TO WATER)

Survey delivery

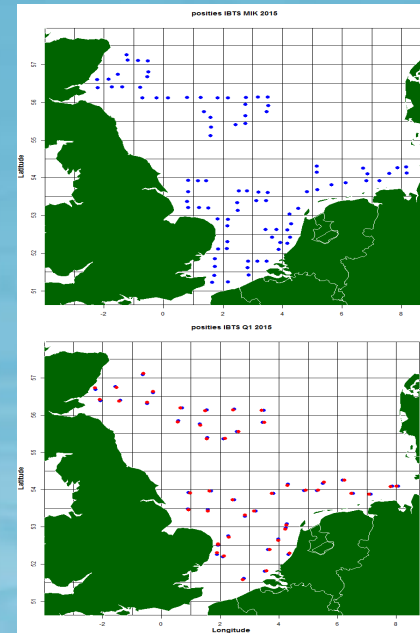
- 28th Jan – 13th Feb 2015
- Transit Lowestoft to Scheveningen and return
- Mob/demob Scheveningen (1 day either end)
- IMARES/Cefas/RWS/P&OMS crew
- 44 GOV fishing stations
- 90 MIK net stations
- All aims completed
- Zero weather down time for fishing activity



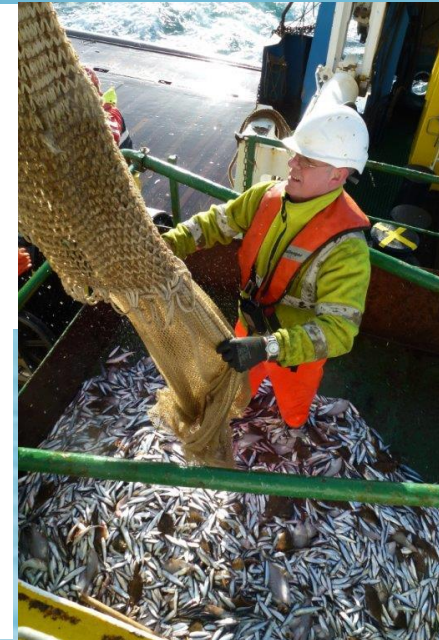
Dirk van Rijn, IMARES



Ralph van Hal, IMARES



Ralph van Hal, IMARES



Dirk van Rijn, IMARES

Post survey

- Wash up discussions
- Looking to work with RWS/IMARES to deliver further survey work
- Potential for more strategic partnership with RWS
- Exploring partnership working with others



Maurits Heijden, RWS

Endeavour schedule – 15/16

	1	2	3	4	5	6	7	8	9	10	11	12	13	14	15	16	17	18	19	20	21	22	23	24	25	26	27	28	29	30	31	
2015																																
January																																
February																																
March																																
April																																
May																																
June																																
July																																
August																																
September																																
October																																
November																																
December																																
2016																																
January																																
February																																
March																																

 Poss crew change	 Firm	 Only Possible	 Maintenance
 Safety Exercise			